



MOLINO

ESTATE



WELCOMÉ





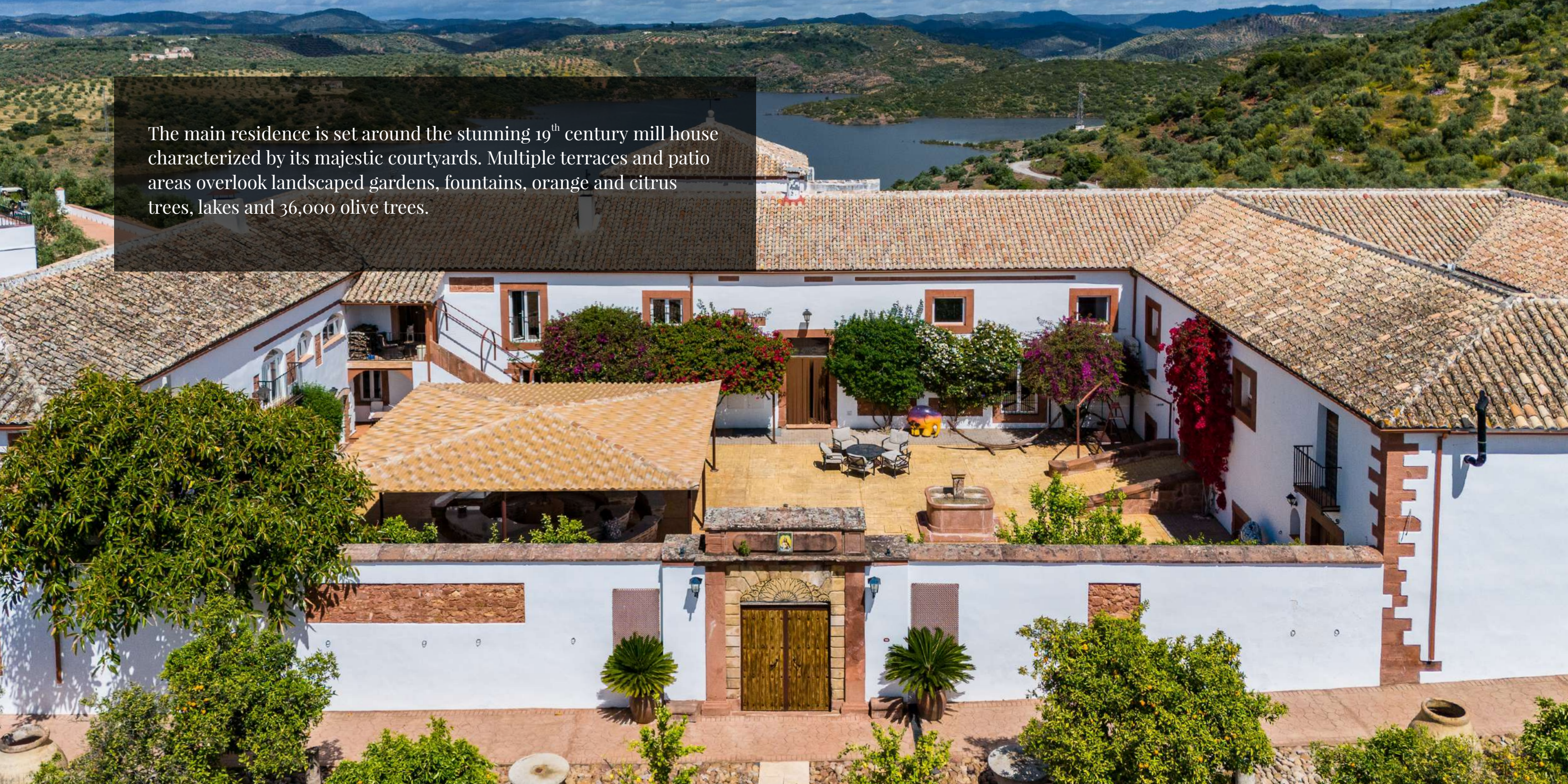


Nestled amongst the rolling hills of Montoro sits El Molino Estate, a stunning 158-acre olive farm with breathtakingly beautiful views.

Authentic features are plentiful and blend in perfectly with the high-end, tasteful renovations and refurbishments conducted throughout the estate.



The main residence is set around the stunning 19<sup>th</sup> century mill house characterized by its majestic courtyards. Multiple terraces and patio areas overlook landscaped gardens, fountains, orange and citrus trees, lakes and 36,000 olive trees.







The inner courtyard acts as the central gathering place with an imposing wood fire taking centre stage alongside a fully equipped kitchen and numerous dining/lounge areas. This two-storey building has seven independent apartments discreetly located within the original mill house walls.





The primary apartment faces west with stunning lake views. The main bedroom has a large walk-in wardrobe, a private bathroom with a sunken jacuzzi bath, floor to ceiling windows and doors that open on to a private terrace with a BBQ and entertaining area. There are two further bedrooms with a shared bathroom, a full-sized kitchen, and a comfortable lounge with a traditional, full-sized fireplace.









The central courtyard connects indoor and outdoor entertaining areas of the mill house. Original features are retained and blend effortlessly with modern amenities required for everyday living including a BBQ.

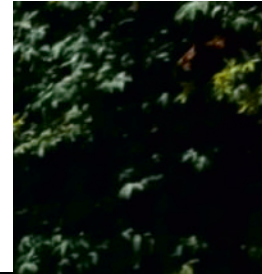




## The Pool House

This magnificent, remodelled building has been transformed into a stunning facility showcasing a very well-equipped gym, male and female changing areas, an open-plan lounge and TV area with bar/coffee centre.

A wonderful lap pool measures 15 meters by 4 meters and leads onto an outdoor terrace with a fully fitted commercial kitchen with a BBQ and dining area.

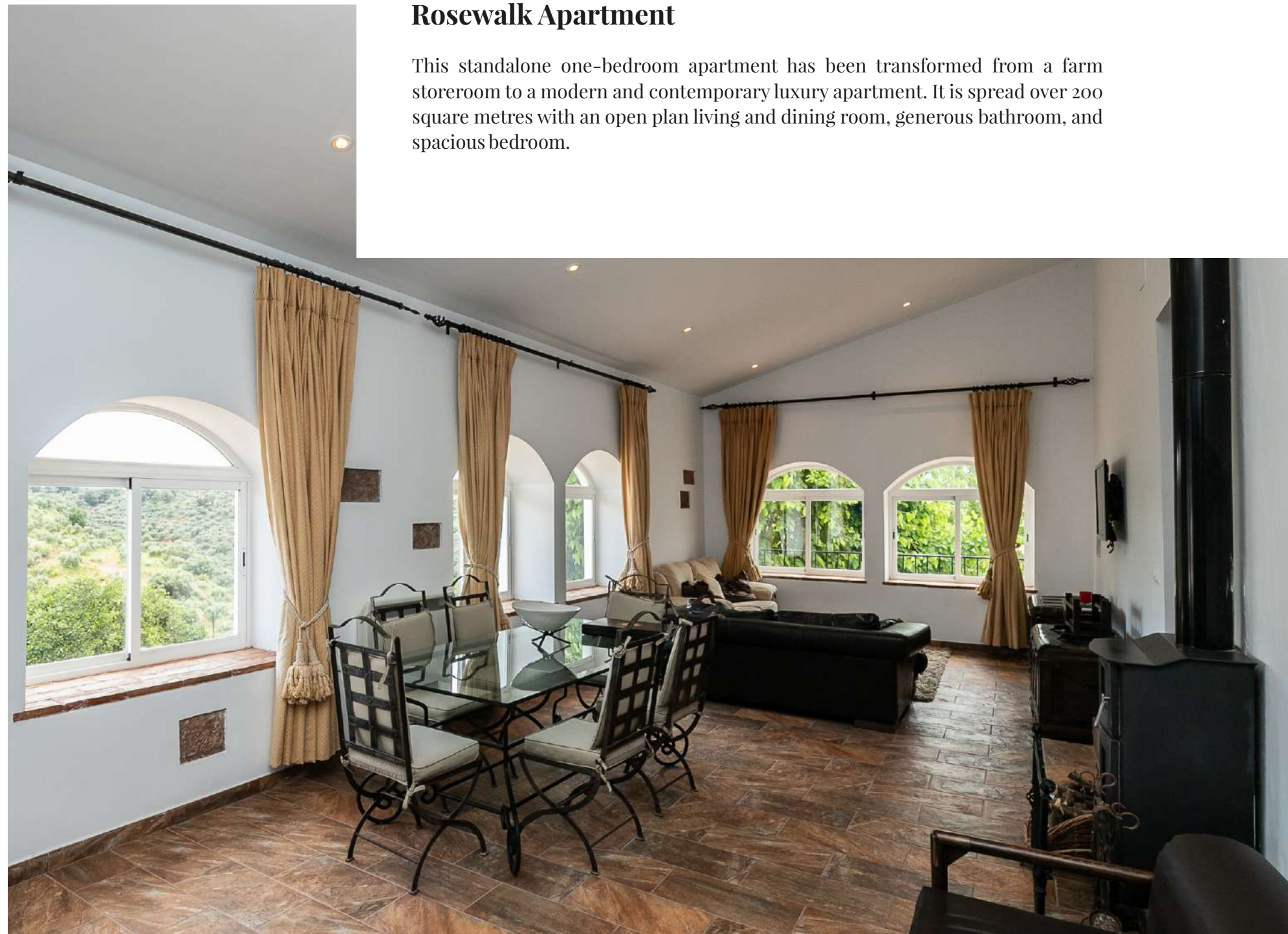






## Rosewalk Apartment

This standalone one-bedroom apartment has been transformed from a farm storeroom to a modern and contemporary luxury apartment. It is spread over 200 square metres with an open plan living and dining room, generous bathroom, and spacious bedroom.







## The Family Apartment

Located from the inner courtyard this two-storey, self-contained, 4-bedroom apartment sits in the east wing of the estate.

Originally a storeroom of the mill it now features a full-sized kitchen with an open-plan dining and living area overlooking the lake.

A large terrace has its own BBQ and entertaining areas.





## The Bodega

A staircase leads you down to The Bodega that consists of stone tasting rooms connected by a tunnel, which are perfect for entertaining and storing wine. A wonderful glass ceiling lets in natural light from the inner courtyard.

## The Cinema Room

Features 10 cinema style seats plus sofa areas. It is located on the ground floor of the inner courtyard.



## The Gallery Bar

(Dog & Duck) - is accessible via a spiral staircase leading from the inner courtyard. It has a fully equipped bar and entertainment area.

## The Library

A circular staircase from the inner courtyard takes you to The Library transporting you back to the 19<sup>th</sup> century. Floor-to-ceiling wooden bookcases adorn the impressive room with a picture postcard window overlooking the lake.







Hot summers and cool winters are the perfect combination for producing El Molino olive oil from 36,000 olive trees that have been harvested since 1875.

Idealic surroundings for exploring the countryside on horseback with purpose built stables and arena.





El Molino → Cordoba 47 km ~ 30 minutes  
 El Molino → Seville 172 km ~ 1h50 minutes  
 El Molino → Granada 168 km ~ 1h50 minutes  
 El Molino → Cadiz 272 km ~ 3h14 minutes  
 El Molino → Madrid 358 km ~ 3h50 minutes  
 El Molino → Malaga Airport 190 km ~ 1h50 minutes

## Features at a Glance

- 158-acre estate with 36,000 olive trees
- Electric gates with security and alarm settings
- Versatile accommodation consisting of:
  - 4-bed gate house
  - 3-bed primary apartment
  - 4-bed, 2-storey family apartment
  - 2 x mezzanine apartments
  - 2-bed, first floor apartment
  - 1-bed, first floor apartment
  - 1-bed, ground floor apartment
  - 1-bed, independent Rosewalk apartment
- 12+ seater dining and entertainment area with radiant floor heating (hot & cold)
- Outdoor swimming pool (partially covered) with commercial kitchen and dining area
- Gymnasium
- Coffee & Bar/ lounge area
- Stone wine vault
- Cinema room
- Library
- Stables for 3 horses and arena
- Original 19<sup>th</sup> century features including 150-year-old flagstones
- Fully integrated solar panel system



# EL MOLINO E S T A T E

MONTORO - CORDOBA - SPAIN

+351 964 005 638

[info@elmolinoestate.com](mailto:info@elmolinoestate.com)

[www.elmolinoestate.com](http://www.elmolinoestate.com)

